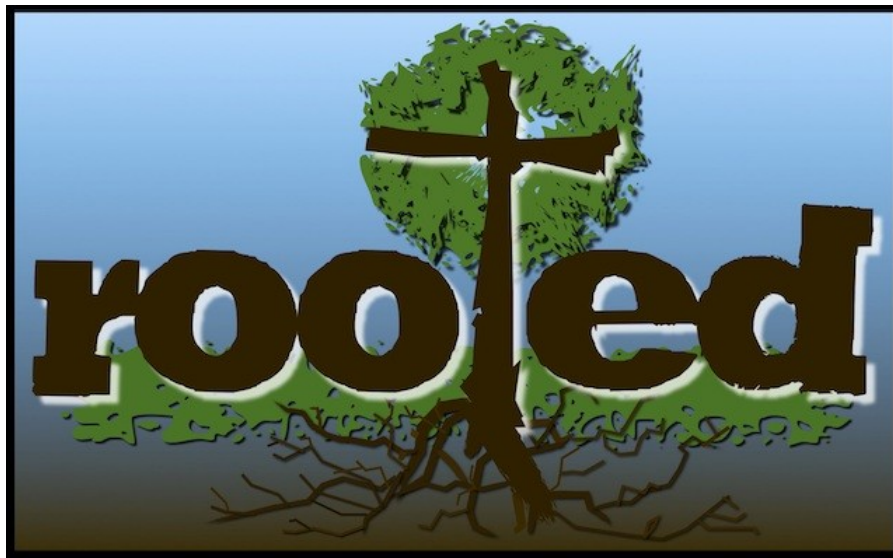


First Presbyterian Church of Grimes

Rev. Dr. Lynn Williams, Pastor

WE ARE A PEOPLE OF FAITH
CALLED BY CHRIST
TO SHARE
GOD'S GOOD NEWS
IN TODAY'S
ACTIVE WORLD.



410 SE Third St.
P.O. Box 289
Grimes, IA 50111
Email: grimespres@hotmail.com

Phone: 515-986-3720
Fax: 515-986-0693
www.grimesfirstpresbyterianchurch.org

Sunday, July 28, 2013

9:15am Worship Service

Welcome to First Presbyterian Church

Please sign the attendance pads found in the hymnal rack and pass it to those sitting near you. You're invited to join us for friendship and refreshments in Fellowship Hall following Worship.

Children are most welcome in our Worship Service. However, we do have a nursery available for children 5 years of age and younger. If you need assistance, please see an usher.

Our Worship Attendance & Giving

Attendance: 7/14/2013 - 61 Pledges: \$ 725.00 Other Gifts: \$ 277.00
Attendance: 7/21/2013 - 80 Pledges: \$1,224.00 Other Gifts: \$ 720.00

(Figures represent offerings for the regular church budget).

Around Your Church & Community This Week

Today: **9:15am** **Worship**
 10:15am **Fellowship Time**

Tues.: **10:00am** **Lectionary**

Wed.: **1:00-2:00pm** **Youth Drop-In Day with Beth Johnston**
 7:00pm **Personnel Committee Meeting**

Sat.: **(time TBA)** **Youth outing to Adventureland (sign up TODAY)**

Weekly, Mon-Fri, 9:30am to 1:30pm—Grimes Senior Meal Site is open

Erin will have regular office hours on Monday and Tuesday this week, and will be taking vacation from Wed., July 31st through Tues., August 6th.

Church Office Manager: Erin Schmitz

Erin's hours are Tues.–Fri. 9am-2pm. Email: grimespres1@hotmail.com

WE GATHER TO WORSHIP GOD

PRELUDE

THE WELCOME AND TIME OF GREETING

Please sign the attendance pads found in the pews.

RINGING OF THE CHURCH BELL

CALL TO WORSHIP - Psalm 85: 4-9

Leader: Restore us again, O God of our salvation, and put away your indignation toward us.

People: Will you be angry with us forever? Will you prolong your anger to all generations?

Leader: Will you not revive us again, so that your people may rejoice in you?

People: Show us your steadfast love, O Lord, and grant us your salvation.

Leader: Let me hear what God the Lord will speak, for he will speak peace to his people, to his faithful, to those who turn to him in their hearts.

People: Surely his salvation is at hand for those who fear him, that his glory may dwell in our land.

Leader: We can live, for the Lord is near.

People: Rejoice in the Lord and give thanks!

*OPENING HYMN (Hymn 384)

"This Is My Father's World"

*PRAYER OF CONFESSION (Together)

"O God, we know that our efforts to converse with you never match your willingness to engage us. Too often we draw away from you and refuse to listen to your voice. We choose distractions rather than main events. Forgive us, we pray, and turn us to your light. In Jesus' name we pray for forgiveness. Amen."

*ASSURANCE OF PARDON

A TIME WITH OUR YOUNG PEOPLE

READING OF NEW TESTAMENT SCRIPTURE -- Colossians 2: 6-15

(pages 200-201 in the New Testament of your pew Bibles)

(page 245 in the New Testament of large print Bibles)

SERMON "Abounding in Thanksgiving"

THE OFFERTORY HYMN (Hymn 484, verses 1,2,4)

"The Old Rugged Cross"

(The Offering will be received during the singing of the Hymn.)

SHARING OF JOYS AND CONCERNS

PRAYERS OF THE PEOPLE & THE LORD'S PRAYER

(We use the words 'debts' and 'debtors' in The Lord's Prayer).

*CLOSING HYMN (Hymn 522)

"Savior, Like a Shepherd Lead Us"

*BENEDICTION & POSTLUDE

(*Those who are able please stand)

"As you therefore have received Christ Jesus the Lord, continue to live your lives in Him, rooted and built up in Him and established in the faith, just as you were taught, abounding in thanksgiving."

Colossians 2: 6-7

Serving the Lord with Gladness

Offering Counters for today: Cyndy Bolsenga & Tom Wengert

Today: Sunday, July 28th, 2013:

Pastor ~ Rev. Dr. Lynn Williams • Acting Youth Director ~ Beth Johnston
Organist ~ Colene Townsend • Pianist ~ Nancy Mitchell
Ushers & Greeters ~ Jerry & Gai Shields
Coffee Hosts ~ Cornwell Family
Nursery Attendants ~ Polich Family

Session Members

Class of 2013	Class of 2014	Class of 2015
Janel DeJoode	Leon Altman	Cyndy Bolsenga
Brenda Peterson	Bob Heston	Ben Johnston
Ellen Workman	Chris Klug	Ron Rosenberg

Deacons ~ Susan Ballard, Phyllis Rosenberg, Gai Shields,
Robbin McClelland and Joyce Hart

Clerk of Session ~ Cyndy Bolsenga

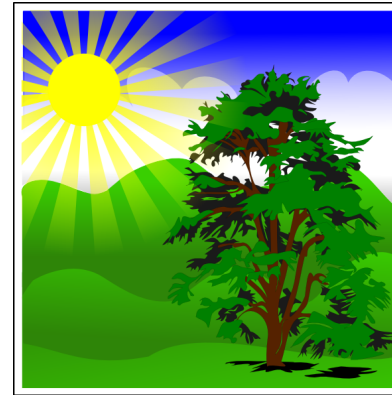
Serving next Sunday, August 4th, 2013:

Pastor ~ Rev. Dr. Lynn Williams • Acting Youth Director ~ Beth Johnston
Organist ~ Colene Townsend • Pianist ~ Nancy Mitchell
Communion Servers ~ Don & Mary Lou Friar, Ron Rosenberg, Tom Wengert
Ushers & Greeters ~ Tom & Hailey Wengert
Coffee Hosts ~ Don & Robbin McClelland
Nursery Attendants ~ Crosby Family

Offering Counters for August 4th & 11th: Robbin McClelland &
Phyllis Rosenberg
August 18th & 25th: Bob Heston & Chris Klug

We served 160 people at the Ice Cream Social last Sunday evening. Freewill donations totaled \$776.00. Many thanks to the congregation for supporting this successful event, and thank you to those who signed up and offered donations of food supplies and their time. Special thanks to Connie Sharp, Don Hart, and Cyndy Bolsenga for their help.

- - Bill Sharp



Worship at Jester Park

Sunday, August 18th

A potluck lunch will follow worship, so please bring your favorite dish to share.

More details to come, but please mark your calendars, and we hope to see you there!

Families with Youth: Please be sure to take a look at the back cover of your bulletin for upcoming youth activities. There's still lots of fun to be had this summer!

If you wish to receive emails regarding youth events and activities and have not received one recently or wish to have them sent to a different email address, please send your current email address to me (bej621@msn.com), and I will see that you are added to my notification list!

- - Beth Johnston

Did you know?? The Sunday bulletins can be found on the church website under **Resources**. Missed a Sunday service? Go to www.grimesfirstpresbyterianchurch.org to see the info from that Sunday.

In service to the congregation, we ask that compliments, complaints or concerns please be directed to the appropriate committee chairperson (below) as a first step.
We Are Sincerely, Your Church Session

Building & Grounds Committee: Leon Altman
Christian Education Committee: Ben Johnston
Evangelism Committee: Bob Heston
Fellowship Committee: Brenda Peterson
Local Mission Committee: Leon Altman, Chris Klug
Member Care Committee: Janel DeJoode, Ron Rosenberg
Memorial Committee: Cyndy Bolsenga, Chris Klug
Nominating Committee: Ellen Workman, Bob Heston
Personnel Committee: Ellen Workman, Leon Altman, Ron Rosenberg
Stewardship Committee: Janel DeJoode
Worship Committee: Chris Klug

2013 CROSS Ministries Back-to-School Giveaway

Volunteers are needed to fill 1,500 backpacks with donated school supplies!

Let's help our church help the larger community!

We'd like to make this a volunteer opportunity for the whole congregation, much as the Meals for the Heartland project was. The greatest need for volunteers is on **Tuesday, August 6th** starting at **5:30pm**.

We'll plan to meet at the church a little before 5:00pm on Aug. 6th for carpooling to Cottage Grove Presbyterian Church. The packs will be filled assembly-line style in the basement of the church, and work will continue until all the packs are filled. Volunteers do not need to commit to the entire time - any hands are welcome for any amount of time they can work.

Volunteers of all ages are welcome, but a parent should plan to help younger volunteers to make sure each pack gets the proper number of each item.
Please see **Beth Johnston** for more information.

Youth Activities

Youth Drop-In Day • Wednesday, July 31st • 1:00-2:00pm at the church

Stop by to exercise your creativity and have fun! Beth will be there with craft supplies and games. Kids of all ages are welcome. While school age children may stay on their own, it is requested that a parent or sitter plan to stay with preschool children to ensure the acceptable child/adult care ratio is maintained.

Middle School & High School Youth: **Day trip to Adventureland!**

Saturday, August 3rd

As always, friends are welcome!

There's a sign-up sheet on the table by the church office; you can call Beth at 984-9285; or email Beth at: bej621@msn.com.



Last day to sign up is Sunday, July 28th.

We would also welcome any parents who would be willing to come along as chaperones - please sign up on the same sign-up sheets. Beth will purchase the tickets on Monday, July 29th. If we have a group of 15 or more, the cost will be \$28/person; otherwise, the tickets will be \$30/person.

Yes, Beth rides rollercoasters!